

W-6 UPPER SEGMENT: HWY 90 TO SW MILITARY DRIVE SEWER MAIN PROJECT

Gail Hamrick-Pigg, PE

Director - Engineering

Jeff Farnsworth, PE

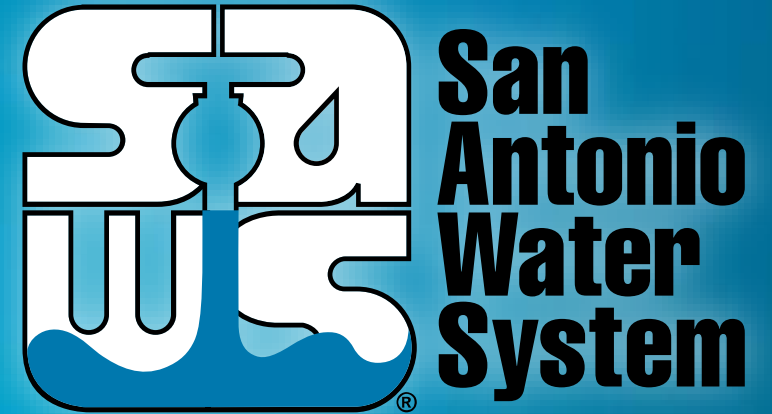
Kimley-Horn and Associates Sr. Project Manager

Diana L. Woltersdorf

Contract Administration Manager

Marisol V. Robles

SMWVP Program Manager



Non-Mandatory Pre-Proposal Meeting
March 18, 2020 at 2:00PM

MAKING SAN ANTONIO
WATERFUL



WebEx Meeting Information

- Thank you for your patience and understanding in the changes recently made to CDC guidelines as it relates to COVID-19
- With the switch to an online WebEx meeting, attendees can:
 - Access the presentation thru the WebEx link to follow along real-time, and use the chat feature to ask questions, or
 - Access via phone and follow along with the PowerPoint posted on the SAWS web at :
 - Ask questions through emails to Florinda.Gonzales@saws.org
- SAWS will read questions aloud
- Please mute your phone during the meeting
 - SAWS will conduct roll call for prime contractors to identify themselves briefly (companies participating)

Meeting Agenda

- Non-Mandatory Pre-Proposal
- Project Overview
- Project Location
- Contract Requirements
- RFCSP Evaluation Process
- Required Experience
- Evaluation Criteria
- SMWVB
- Proposal Packet Preparation
- Additional Reminders
- Communication
- Key Dates
- Project Location
- Project Information
- Questions

Oral Statements

Oral statements or discussion during the pre-proposal meeting will not be binding, nor will it change or affect the terms or conditions within the Plans and Specifications for this Project. Changes, if any, will be addressed only via an Addendum.

Non-Mandatory Pre-Proposal Meeting

- Key project information:
 - 1,217 calendar days
 - Construction estimate is approximately \$180 million
 - Request for Competitive Sealed Proposal procured under Chapter 2269 of Texas Government Code
 - EPA consent decree project, which requires additional reporting and document retention of document (see Special Conditions)
- Prime contractors invited to identify firm name

Project Overview

- Construction of 104-inch gravity sanitary sewer pipeline via large diameter tunneling methods, at depths up to 145-feet
 - And in similar ground conditions as described in the Geotechnical Baseline Report.
- Tunnel construction, shaft installation, and permanent shaft liner installation, with depths up to 145-feet.
- Construction of 60, 78, and 104-inch gravity sanitary sewer pipeline installation at depths up to 40 feet via open cut installation methods.
- Installation of large diameter (78-inch and larger) gravity sewer within the 100-year floodplain.

Project Location

LEGEND:

- PROPOSED 104" SANITARY SEWER
- PROPOSED 60" SANITARY SEWER
- PROPOSED 78" SANITARY SEWER
- PROPOSED SANITARY SEWER CONNECTIONS



PROPOSED SHAFTS:

- PROPOSED SHAFT #1 - W6 MIDDLE CONNECTION SHAFT
- PROPOSED SHAFT #2 - PEARSALL SHAFT
- PROPOSED SHAFT #3 - MERRY OAKS SHAFT
- PROPOSED SHAFT #4 - WATER TOWER SHAFT
- PROPOSED SHAFT #5 - HOTEL SHAFT
- PROPOSED SHAFT #6 - SOLIDS HANDLING SHAFT
- PROPOSED SHAFT #7 - W-1 CONNECTION SHAFT
- PROPOSED SHAFT #8 - BALLPARK SHAFT
- PROPOSED SHAFT #9 - CALLAGHAN SHAFT



W-6 Upper Segment



Contract Requirements

- Prevailing Wage Rate and Labor Standards – Section 2.10 of the General Conditions
 - Wage decisions located in the specifications
 - Certified payroll submitted on weekly basis
 - Contractors to utilize LCP Tracker
 - Site visits and interviews are random and unannounced (interviews are private & confidential)
 - Payroll records subject to review
 - All apprenticeship programs will need to be approved by Department of Labor prior to starting work
 - Prime contractor is responsible for sub-contractor payroll
 - Late payrolls may delay contractor payments

Contract Requirements *(cont.)*

- Insurance –Section 5.7 of the General Conditions
 - General Liability, Pollution Liability, Excess Liability and Installation Floater is required (see Supplemental Conditions)
 - Builder's Risk is waived
 - Selected contractor must be compliant with all other contracts in order for SAWWS to award the contract.
 - Insurance certificate will be requested prior to Board award
Insurance must be compliant prior to executing the contract.

RFCSP Evaluation Process

- Selection Committee will score the proposals based on the evaluation criteria published in the Supplementary Instructions to Respondents to determine the Respondent who can provide the best value to SAWS
 - Technical scores
 - Price (lowest price receives the highest points)
 - SMWVB added to final scores
- Selection Committee makes recommendation
- Negotiations
- Board Award

Required Experience (SIR-2)

- Respondent's proposal for this RFCSP shall clearly demonstrate, completely and sufficiently, that wastewater pipeline installation via tunnel construction methods is a primary business focus and service, and these services have been successfully provided for at least five (5) continuous years.

Evaluation Criteria (SIR-3 to SIR-6)

Team Qualifications and Experience -15 pts

- Organizational Structure and Key Information of the Prime Contractor
 - Company information (structure, debarment history, # of employees, years of construction work, etc.)
 - Organizational Chart with Key Personnel and percentage of availability, clear description of roles and responsibilities (Prime and Key Subs)
 - Team history, or approach, if no prior experience to ensure successful completion of project
 - Availability of equipment and facilities
 - Financial statement within the last 12 months prepared by independent CPA

Evaluation Criteria (SIR-3 to SIR-6)

Team Qualifications and Experience -15 pts (cont.)

- Qualifications and Experience of Key Personnel Proposed for Project
 - Resumes of Key Personnel on 8 ½ x 11” one per person, not to exceed 1 page as identified on the Org Chart
 - Professional experience, education, role, descriptions of capabilities, etc.
 - List of all other active projects team member assigned, percentage, date of completion of work
 - Similar completed projects with description matches Section B Summary of Work
 - ✓ Key Personnel: PM, Project Superintendent, Open Cut Superintendent, Tunneling/Boring Superintendent, Tunnel Boring Machine (TBM) Operator
 - ✓ Key Subcontractor roles: tunneling, micro-tunneling, hand mining, large diameter open cut, etc.

Evaluation Criteria (SIR-3 to SIR-6)

Team Qualifications and Experience -15 pts (*cont.*)

- Safety Information for Prime and Key Subcontractors
 - Total Recordable Incident Rate (TRIR) for each year last five (5) years
 - Experience Modification Rate (EMR) for last three (3) years
 - Fatalities in the company's safety history (last 10 years)

Evaluation Criteria (SIR-6 to SIR-8)

Quality, Reputation and Ability to Deliver Projects on Schedule and within Budget - 15 pts

- Prime Contractor On-Time Completion on Similar Projects in the past 10 years
 - List and describe 3 completed projects of similar size, scope, and complexity within the last 10 years with references
 - 2 of the 3 projects listed must have been performed by the proposed Key Personnel
 - If SAWWS experience, 1 project of similar size, scope, and complexity should be included

Evaluation Criteria (SIR-6 to SIR-8)

Quality, Reputation and Ability to Deliver Projects on Schedule and within Budget -15 pts (cont.)

- Prime Contractor list all current and recently completed 2-pass tunnel with 54” or larger carrier pipe installed via TBM gravity pipeline projects in the last 5 years.
 - Include project name, owner, corresponding key personnel proposed for this project, original contract completion date and actual date, original price and final price, total cost of Change Orders (CO) with reason for CO, and identify if completed on time and on budget and if not explanation why
 - If not complete, provide percentage of completion
 - And, if off track provide reason and schedule recovery plan

Evaluation Criteria (SIR-6 to SIR-8)

Quality, Reputation and Ability to Deliver Projects on Schedule and within Budget - 15 pts (*cont.*)

- Key Subcontractor(s) Performance on Similar Projects in the past 10 years
 - List of 2 projects that Key Subcontractor's PM and/or Superintendent participated in of similar size, scope, and complexity
 - If Prime will self-perform and has no Key Subcontractors, list 2 additional projects using the same project forms
 - Key Personnel must have participated in at least 1 of the 2 projects
- Same key project information as for prime projects

Evaluation Criteria (SIR-8 to SIR-10)

Project Approach including Delivery Schedule (30 points)

- Project Approach
 - Narrative on completing the project, including key milestones, critical path items, phases and/or sequencing, permits, etc.
 - Describe approach for coordination with key stakeholders
 - Provide innovative ideas for cost savings (due to method or duration)
 - Quality Management Plan including subcontractor oversight, QA/QC, etc.
- Project Schedule, Procurement of Long-lead items, Unforeseen Conditions
 - Critical path method (CPM) schedule in Primavera or Microsoft project
 - Assume NTP of July 13, 2020
 - Include contractual milestones, limitations and completion
 - Procurement of long-lead items including the TBMs (with details on delivery and refurbishment)
 - List and describe prior instances of unforeseen conditions
 - Approach for mitigating and managing risk for unforeseen conditions on this project

Evaluation Criteria (SIR-8 to SIR-10)

Project Approach including Delivery Schedule -30 pts (cont.)

- Availability of Key Personnel and Equipment
 - Specifically utilized for the project
 - Summary details for two (2) TBMs to include:
 - Manufacturer, model, proposed cutter head configuration, capabilities (torque, horsepower, etc.), current status and location and any other pertinent data to demonstrated excavation capability for this project
 - Based on information in the Geotechnical Baseline Report
 - Include examples of prior project with similar ground conditions
 - Owned or leased (if lease include lease agreement) and refurbishment needs and anticipated schedule
 - Corresponding org chart list of available workforce for various disciplines required for this project including number of crews, number of personnel and skill classification

Evaluation Criteria (SIR-10 and SIR-10-SIR-13)

Price Proposal -30 pts

- Lowest total price will receive 30 points.
- Remaining proposals will receive points based on comparison to the lowest price proposal.

SMWVB -10 pts

SMWVB

Eligibility, Scoring, and Special Considerations

From SIR-1: Eligibility for being recognized as an SMWB and counting toward the 20% aspirational SMWB goal:

- Must be certified by the South Central Texas Regional Certification Agency
- Must be certified as a Small Business Enterprise (SBE),
- Must perform a commercially-useful function on the project
- Must have a local presence in the San Antonio Metropolitan Statistical Area

SMWVB

Scoring

<p>A. M/WBE Scoring Method: Up to 10 Points (By percentage). 20.00% M/WBE Goal:</p> <ul style="list-style-type: none"> • MBE Participation Percentage between 1% and 4.99%: 1 Point • MBE Participation Percentage between 5% and 9.99%: 2 Points • MBE Participation Percentage between 10% and 14.99%: 4 Points • MBE Participation Percentage between 15% and 16.99%: 5 Points • MBE Participation Percentage between 17% and 19.99%: 8 Points • MBE Participation Percentage meeting or exceeding 20.00%: 10 Points
<p>B. SBE (Non-M/WBE) Scoring Method (for participation of firms whose sole certification is “SBE”): Up to 5 Points (By percentage). 5% SBE Participation:</p> <ul style="list-style-type: none"> • SBE Participation Percentage between 1% and 1.99%: 1 Point • SBE Participation Percentage between 2% and 2.99%: 2 Points • SBE Participation Percentage between 3% and 3.99%: 3 Points • SBE Participation Percentage between 4% and 4.99%: 4 Points • SBE Participation Percentage meeting or exceeding 5.00%: 5 Points

SMWVB

Special Considerations

- According to the total costs for bid item #66 for Hobas Pipe; the (3) Allowance bid items (#112, 113, & 114); and the cost of a Tunnel Boring Machine (upwards of \$30 million); it has been determined that there is no SMWVB availability for approximately \$56 Million of the W-6 project.
- Therefore, the 20% annual aspirational SMWB goal only applies to **\$106 Million**, which is (more) applicable for SMWB availability. The goal excludes the items mentioned above: Bid Items 66, 112, 113, 114, and the cost of a Tunnel Boring Machine.

SMWVB Questions

Questions related to SMWVB may be directed to SAWS' SMWVB Program Manager until the proposals are due. Her contact information is as follows:

Marisol V. Robles

Contract Administration Department

San Antonio Water System

Email Address: Marisol.Robles@saws.org

Telephone No.: 210-233-3420

SMWVB Questions

Questions related to SMWVB may be directed to SAWS' SMWVB Program Manager until the proposals are due. Her contact information is as follows:

Marisol V. Robles

Contract Administration Department

San Antonio Water System

Email Address: Marisol.Robles@saws.org

Telephone No.: 210-233-3420

Proposal Packet Preparation

- Thoroughly review Instructions to Respondent and Supplementary Instructions to Respondents (the sooner the better)
- Utilize Proposal Response Checklist
 - 1 original, 1 CD or USB/thumb drive matching original and 15 copies
 - Information for the Original differs from copies
- Three (3) envelope/boxes
 - Price Proposal with bid bond
 - Original proposal with CD/USB including all required documents and financial statement
 - 15 copies

Proposal Packet Preparation *(cont.)*

- Ensure contact information for all references is valid, if SAWWS is not able to contact references for any of the projects, points may be deducted or proposal deemed non-responsive
- Use Word version of Evaluation Criteria forms to respond (will be updated via Addendum)
- Ensure required documents are submitted and signed, (i.e. Respondent Questionnaire, CIQ, etc.)
- Entire proposal clearly demonstrates Required Experience
- Evaluation Matrix will be posted on the SAWWS website to assist with required documents and page count

Additional Reminders

- Register with Vendor Registration Program on the SAWS website at www.saws.org to ensure access to the latest information.
- To receive updates on specific projects, registered vendors should subscribe to the project by selecting the project, and clicking 'Subscribe' under the Notify Me box.



Notify Me

Receive updates sent
straight to your inbox.

Subscribe

Communication Reminders

- There shall not be any communication with the following during the Proposal period:
 - ✓ Design Engineer (Kimley Horn)
 - ✓ Geotechnical and Environmental Engineers (Cox/McClain and Arias & Associates)
 - ✓ SAWS Project Manager or Project Engineer
 - ✓ Any other SAWS staff
 - ✓ City Council member or staff
 - ✓ SAWS Board of Trustees
- This includes phone calls, emails, letters, or any direct or indirect discussion of the Proposal

Key Dates

- 4/2 and TBD
- April 1, 2020 by 10:00 AM
- April 9, 2020 by 4:00 PM
- May 1, 2020 by 10:00 AM
- May-June 2020
- June 2020
- June 2020
- July 7, 2020
- July 13, 2020

Geotechnical Core Samples Viewing
Questions Due
Addendum Posted
Proposals Due
Proposals Evaluated
Selected Contractor Notified
Negotiation
SAWS Board Approval/Award
NTP Issued

Submission Due Date










- Proposals due no later than **10:00 AM CDT May 1, 2020**
- Follow specific delivery instructions:
 - Deliver or mail to 2800 U.S. Highway 281 North, Suite 171, Customer Service Building, Counter Services (across from the guard station)
 - Make arrangements if mailing a response to this RFCSP
- Late responses will not be accepted and will be returned unopened

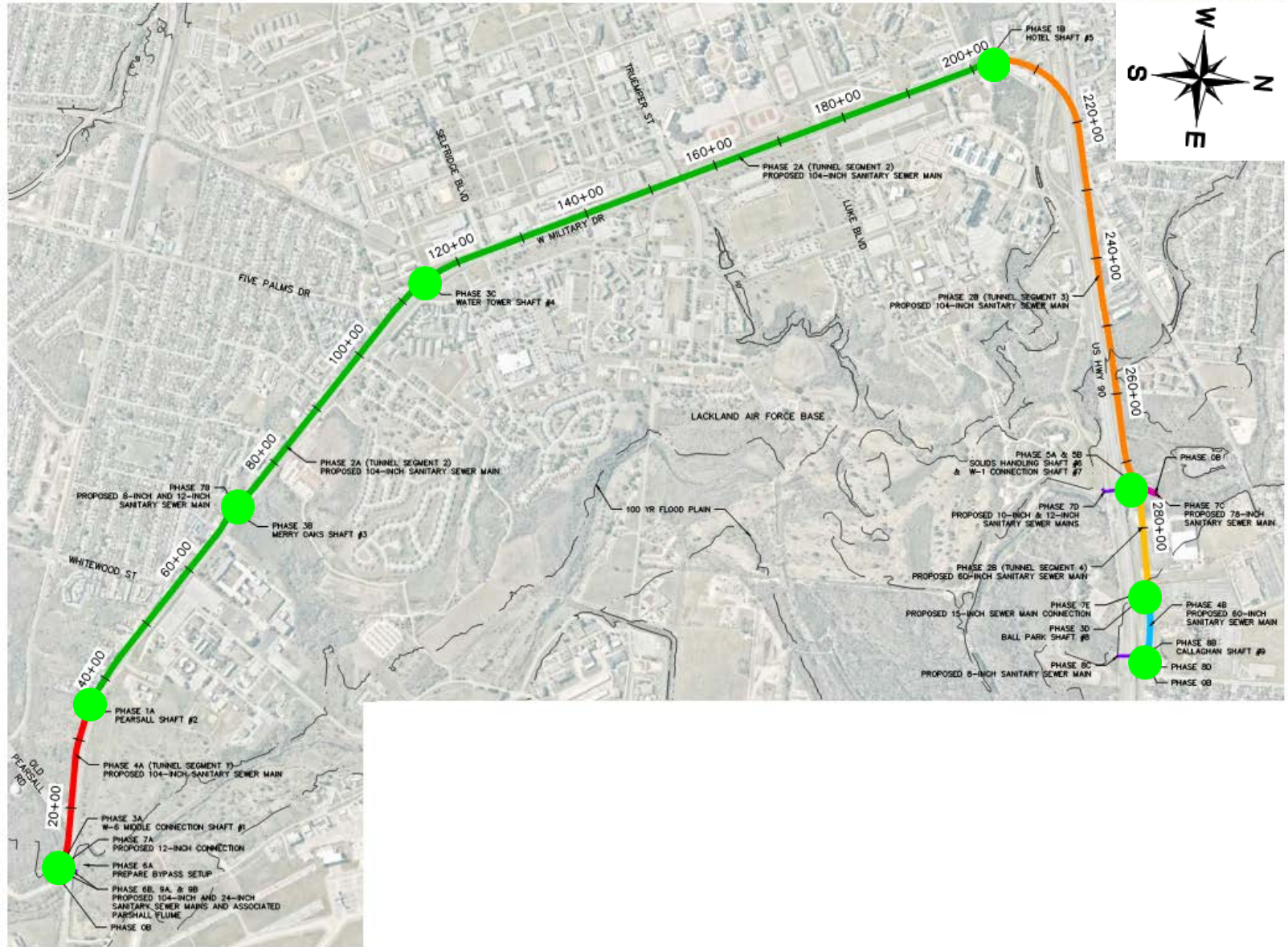
Schedule

- NTP anticipated on July 13, 2020
- Intermediate Milestones
 - TBM Delivery
 - Completion of 1000-ft of Tunnel
- Liquidated Damages
- Early Completion Incentive
- Project to be Substantially Complete on July 13, 2023

Sequencing

LEGEND

	PROPOSED CONSTRUCTION SHAFTS
	104-INCH SEWER MAIN (TUNNEL SEGMENT 1)
	104-INCH SEWER MAIN (TUNNEL SEGMENT 2)
	104-INCH SEWER MAIN (TUNNEL SEGMENT 3)
	60-INCH SEWER MAIN (TUNNEL SEGMENT 4)
	104-INCH SEWER MAIN (OPEN CUT)
	78-INCH SEWER MAIN (OPEN CUT)
	60-INCH SEWER MAIN (HAND TUNNELING)
	SANITARY SEWER CONNECTIONS



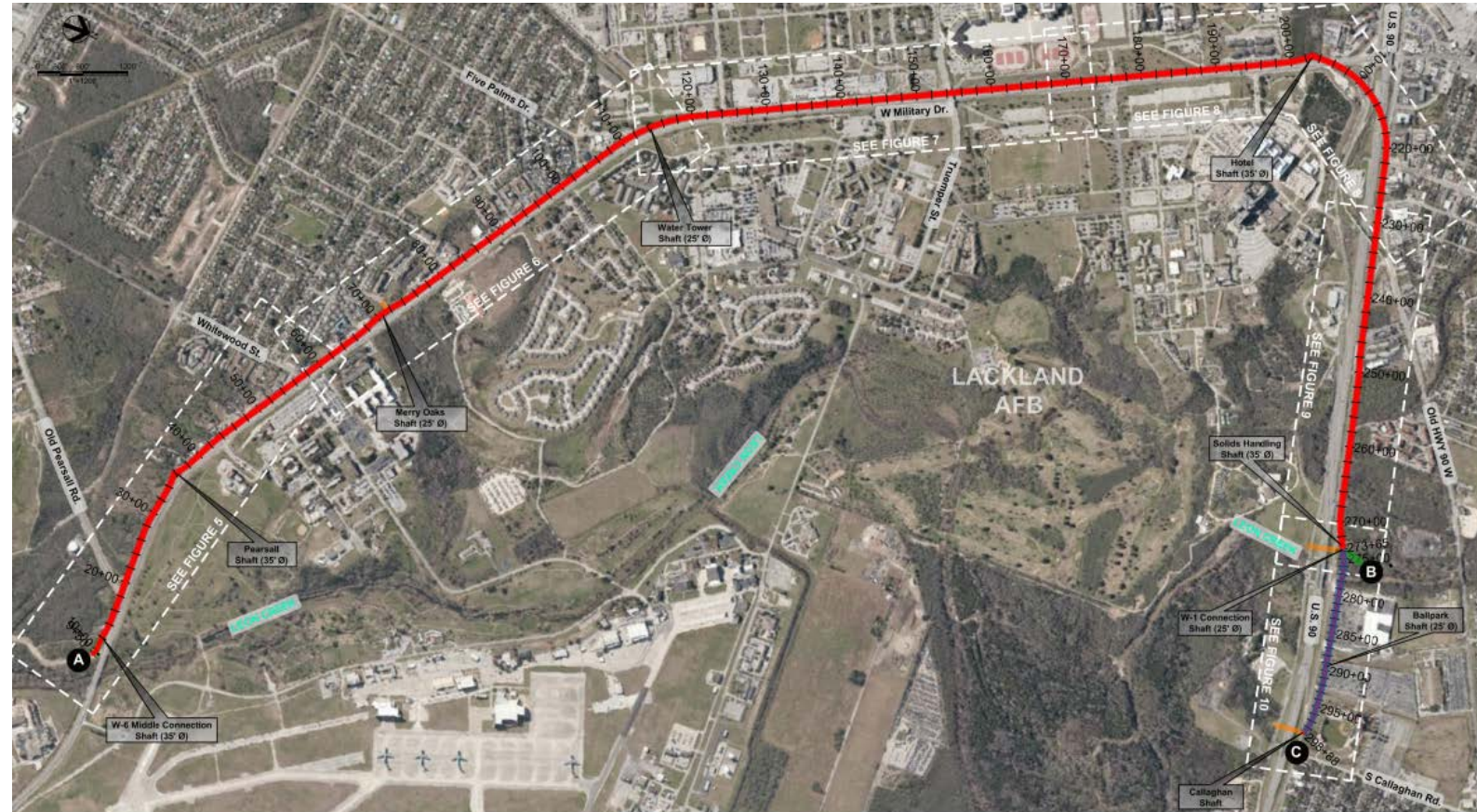
W-6 Upper Segment

Geology and Geotechnical Information Presented in the following Documents:

- Tunnel
 - Geotechnical Data Report
 - Geotechnical Baseline Report
- Open Cut
 - Geotechnical Data Report for Open Cut and Trenchless Installations
 - Geotechnical Design Memorandum for Open Cut and Trenchless Installations

GBR/Tunnel Overview

- General Geology of the Project Area
- Naturally occurring hydrocarbons
- Ground Water
- Leon Creek Crossing
- Initial Tunnel Support



W-6 Upper Segment

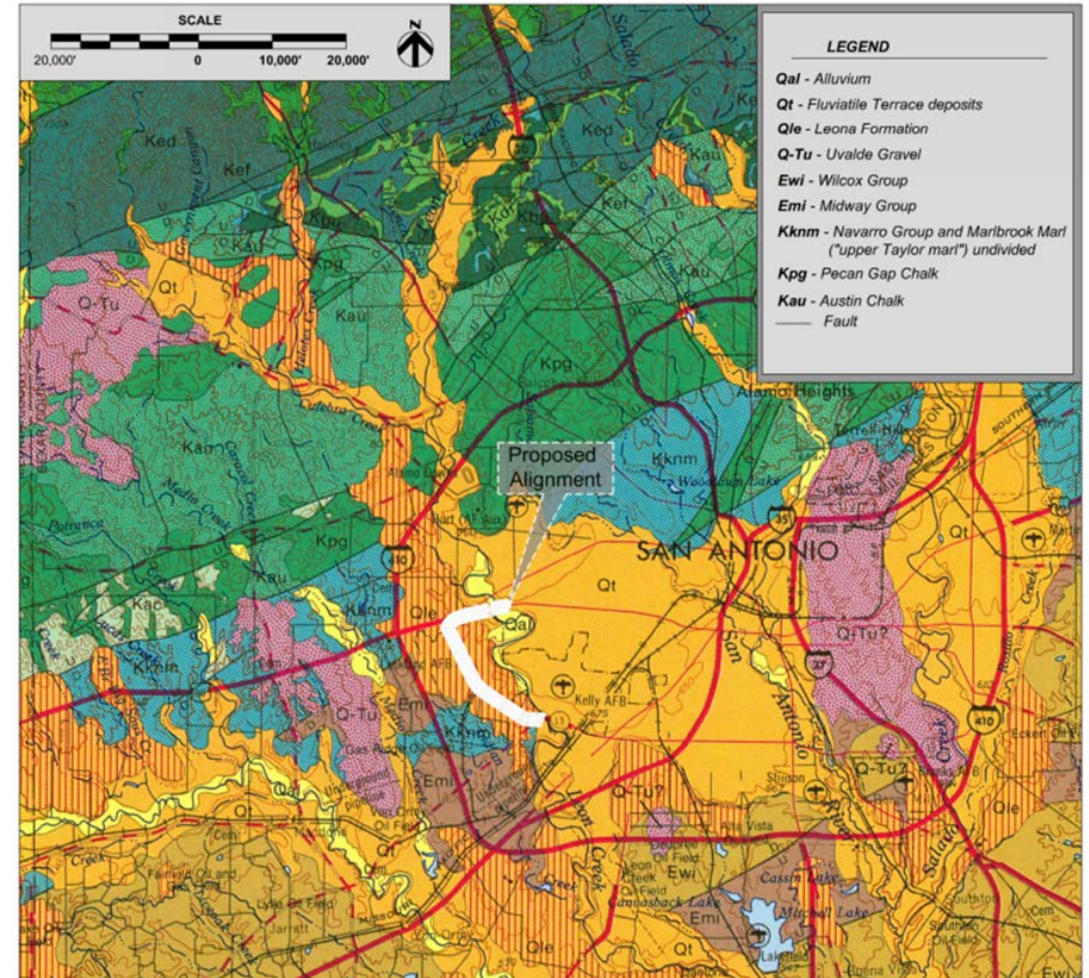


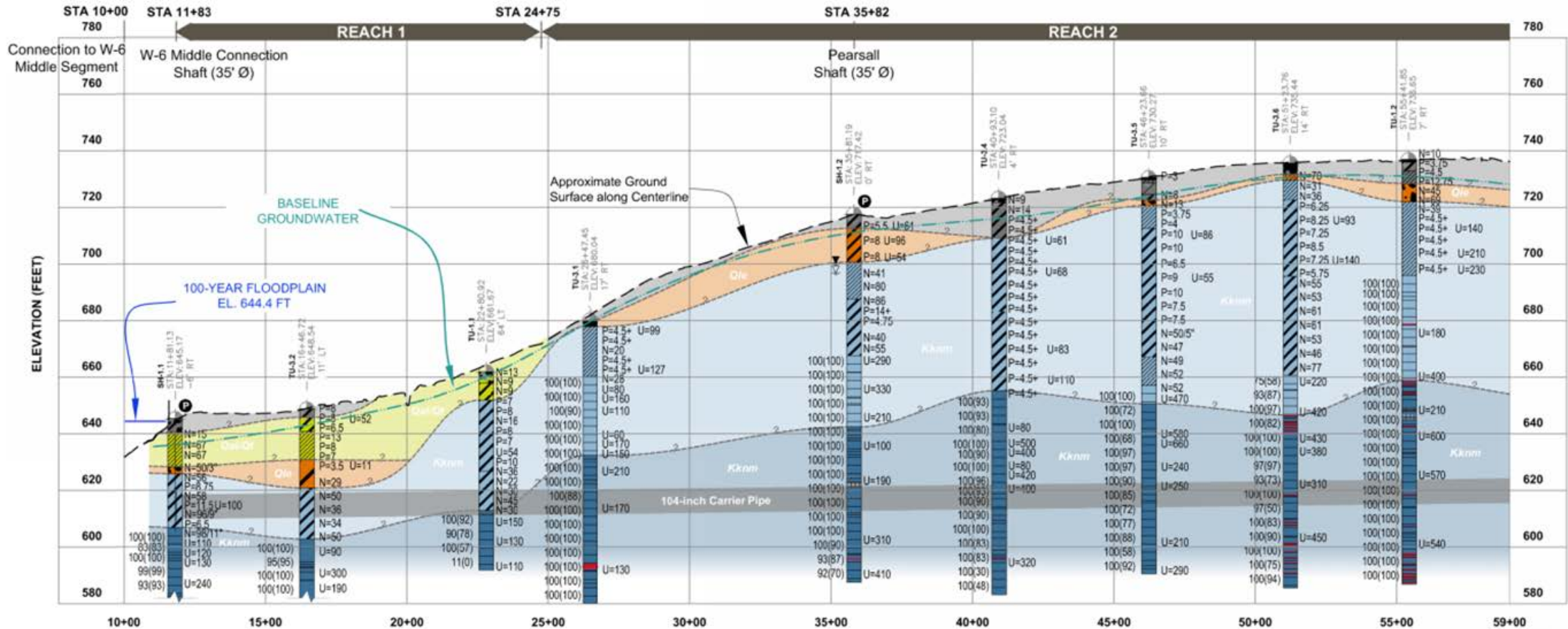
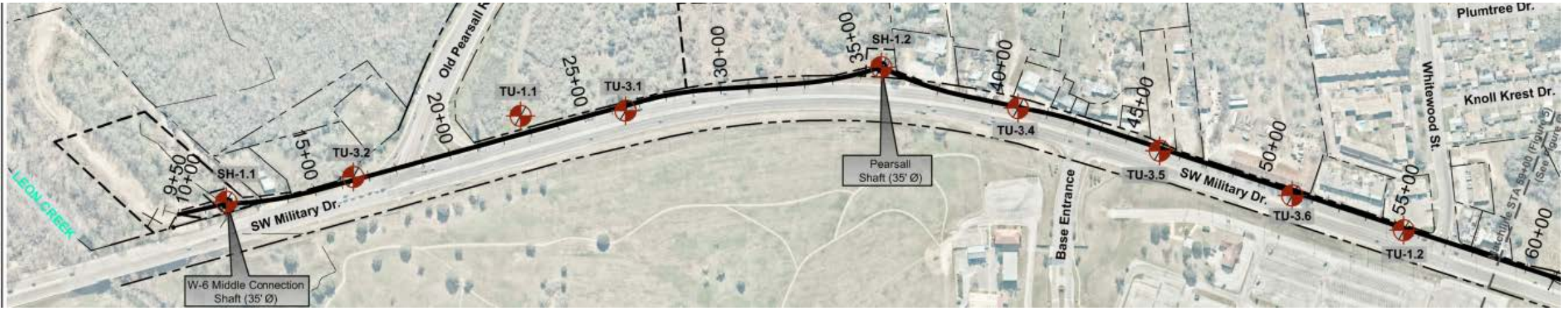
- **Geologic Formations**

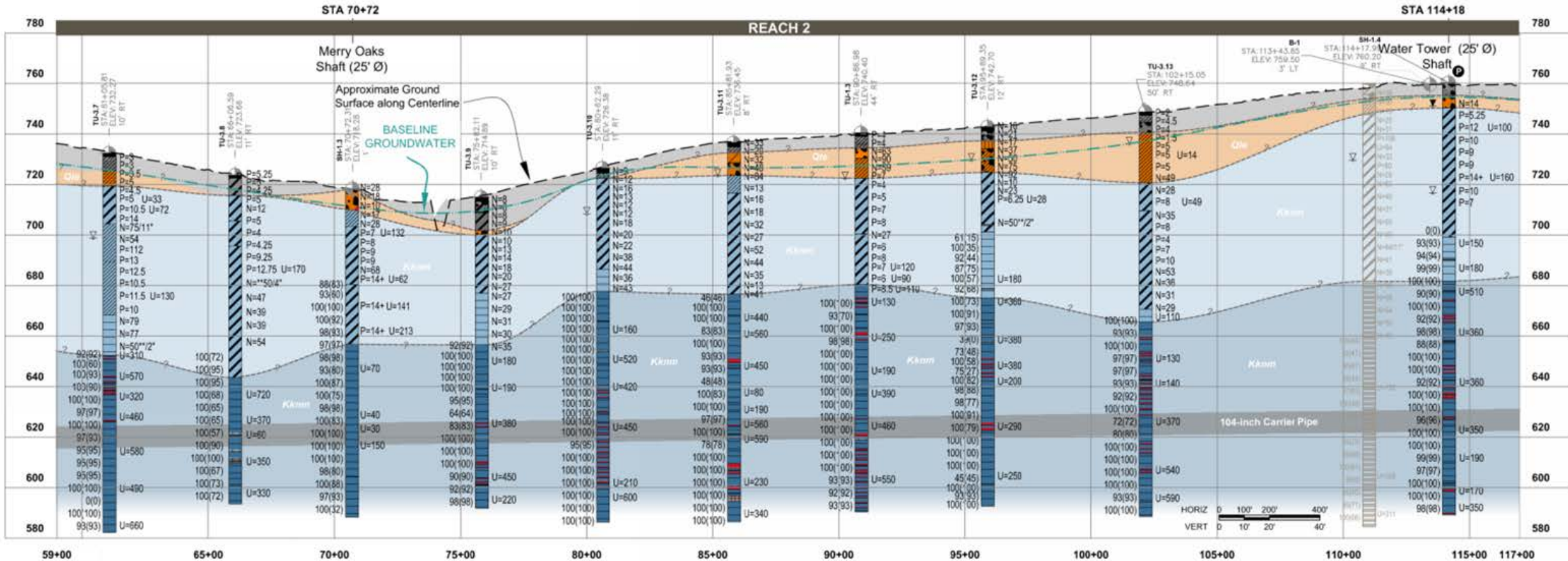
- Fill
- Alluvium/Terrace Deposits
- Leona Formation
- Midway Group
- Navarro Group

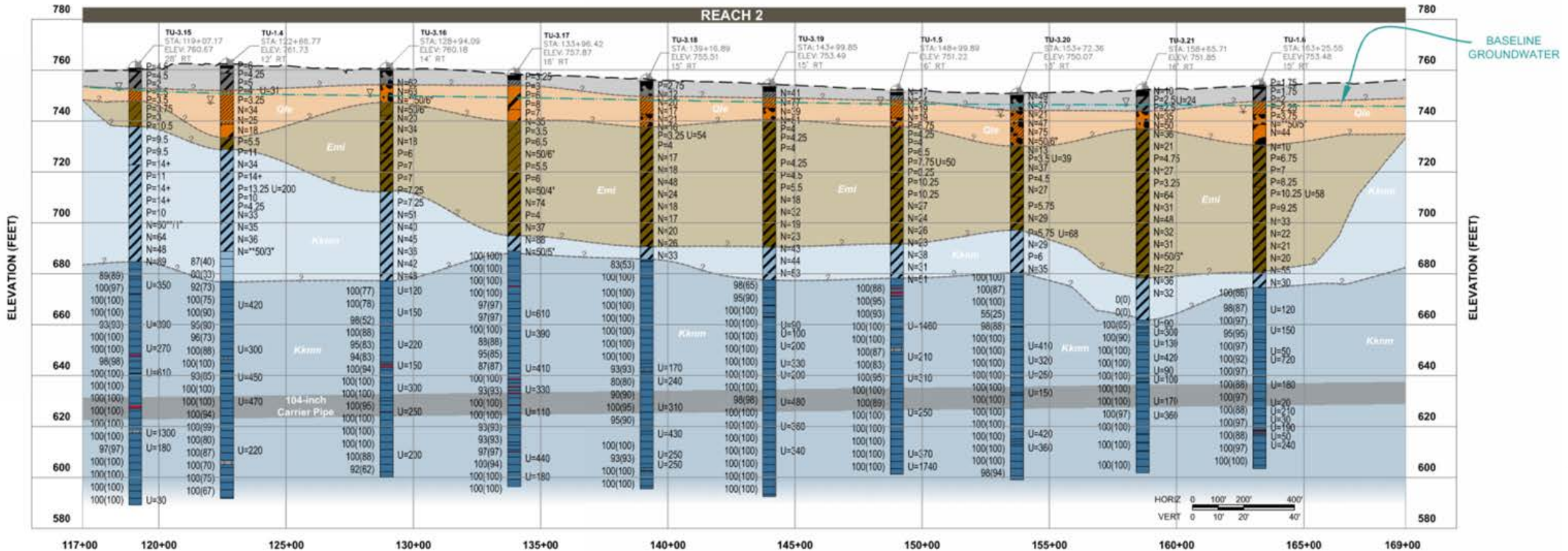
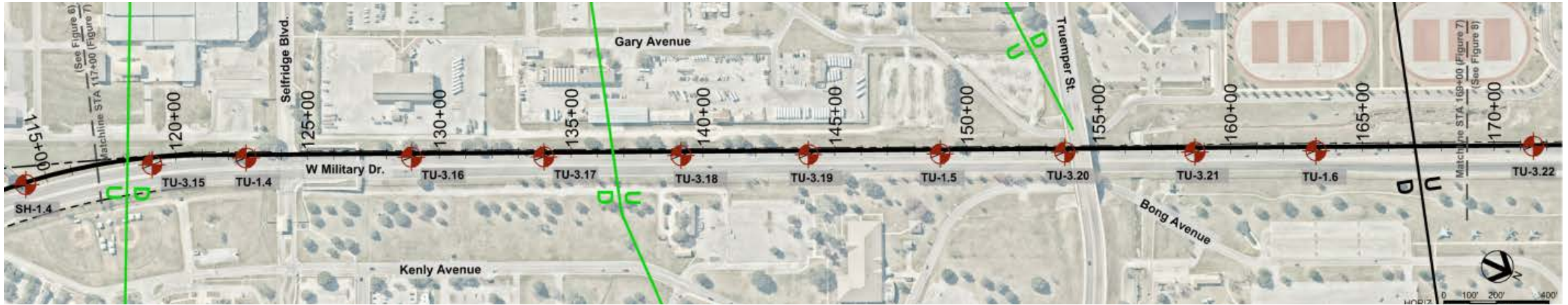
- **Geologic Profiles for Tunnel**

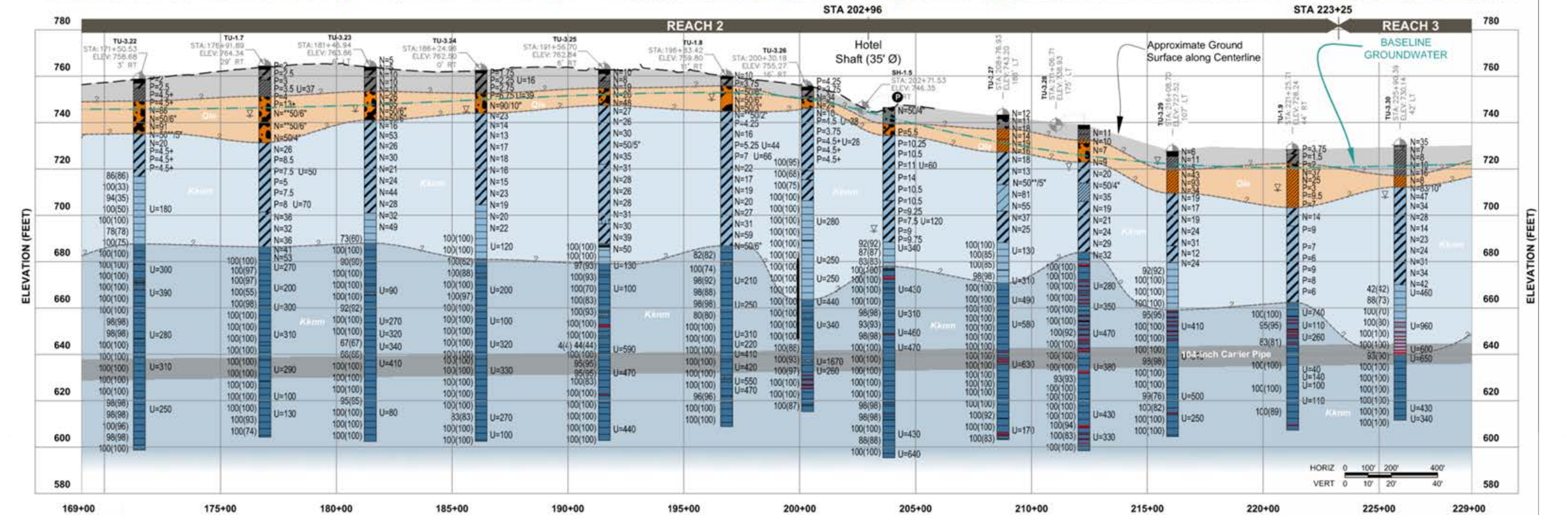
- Profiles and Baseline Ground Behavior provided in the GBR.
- Refer to the GDR for additional information on ground conditions.

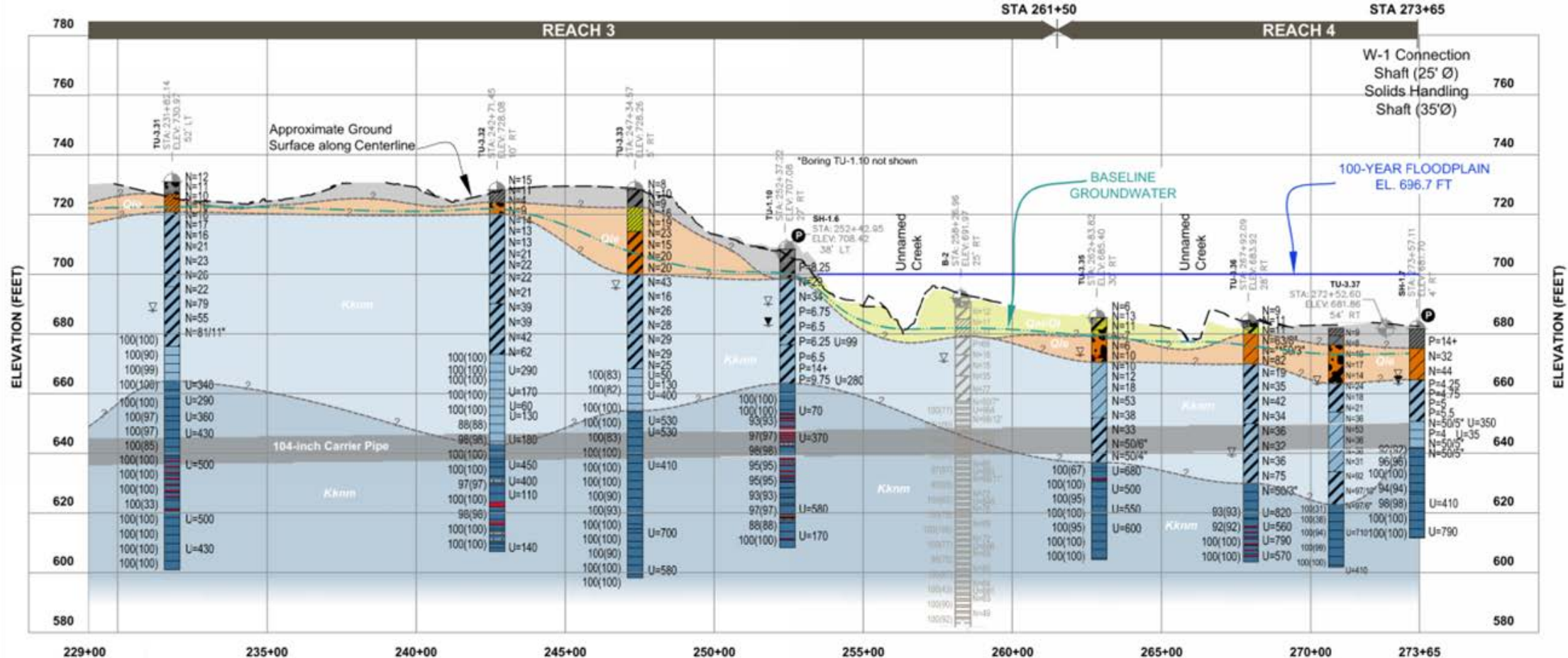
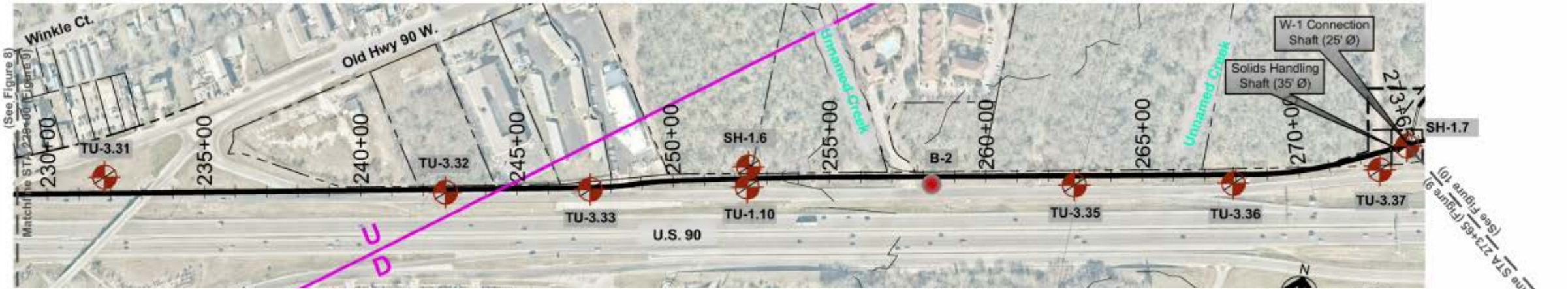










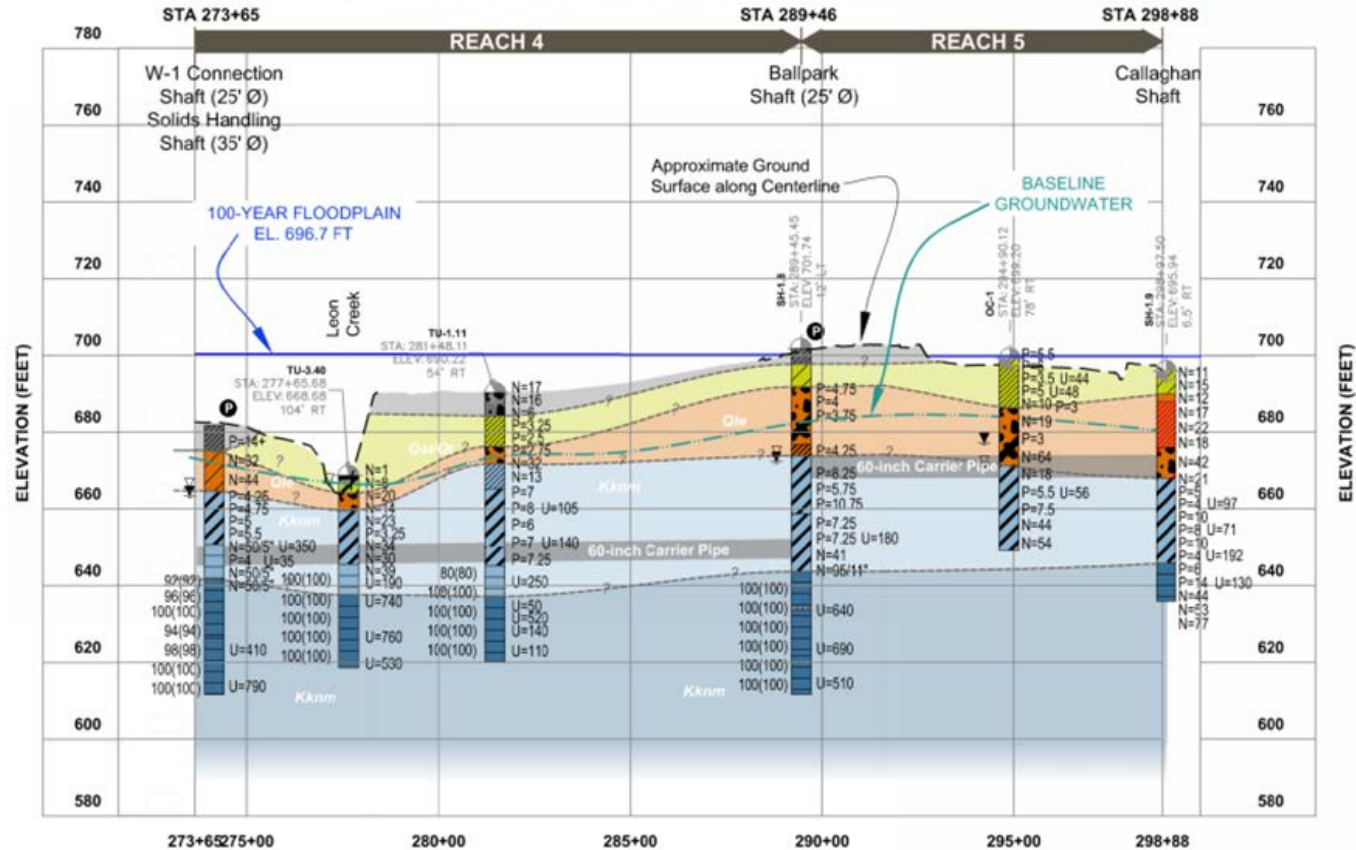


(See Figure 8)

(See Figure 9)

ELEVATION (FEET)

ELEVATION (FEET)



- Notable Features of Tunnel

- Tunnel approximately 12' diameter utilizing two full faced TBMs for 27,762 ft.
- Tunnel approximately 8' diameter utilizing hand mining/mechanical excavation and digger shield for 943 ft.
- 9 total shafts ranging from approximately 33 to 143 feet in depth.
- Pressurized face tunneling required at crossings with Leon Creek.
- Watertight shafts required at W-6 Connection, Solids Handling, and W-1 Connection shafts.

W-6 Upper Segment

- Key Things to Look out for in Documents
 - Swell pressures in the Navarro Group
 - Area of high swell at transition from Military Dr to US 90
 - Slaking behavior of Navarro Group
 - Stickiness of Navarro Group
 - Higher permeability of overburden soils
 - Groundwater near Leon Creek
 - Potential Faults
 - Potentially Gassy Conditions
 - Naturally Occurring Hydrocarbons

- Allowance Items
 - Time Extension for W-I Bypass
 - Odor Control for W-I Bypass
 - Early Completion Bonus
 - Hobas Pipe Material

W-6 Upper Segment

Special Conditions (Overview slide)

- Ballpark
- JBSA
- Coord w/ W-I Contractor
- Construction in Flood Plain
- Spoil Disposal
- FAA
- Escrow Bid Documents

Special Conditions

SC1. The CONTRACTOR shall, to the extent allowed by law, list a landowner or other person or entity with an insurable interest as an additional insured on the Commercial General Liability (CGL) and Commercial/Business Automobile Liability (AL) policy(s) of insurance that CONTRACTOR is required to maintain under this Contract. Landowner shall be added as an additional insured if indicated in the landowner's easement agreement and upon request as needed. Union Pacific Railroad shall be added as an additional insured.

SC2. The CONTRACTOR shall notify the SAWS Construction Manager and the Engineer of Record of anticipated work within TXDOT right-of-way at least 14 days prior to any work within that TXDOT right-of-way.

SC3. CONSEQUENTIAL DAMAGES

Contractor's maximum consequential damages will be limited to an amount not to exceed \$18 million.

SC4. An Environmental Study has been developed for SAWS on this project and has been made available for review by Contractors for informational purposes only. SAWS will require the execution of a SAWS disclaimer form by the potential Respondent as a condition of and prior to the release of the report. To complete the disclaimer form and obtain the report, please go to the following link on SAWS website: https://www.saws.org/business_center/ContractSol/

Find this project, select 'More', then Environmental Study.

SC5. CONSENT DECREE NOTICE PROVISION

The San Antonio Water System ("SAWS"), the United States of America and the State of Texas have entered into a Consent Decree in Civil Action No. 5:13-cv-00666- DAE, United States of America and State of Texas v. San Antonio Water System, in the United States District Court for the Western District of Texas, San Antonio Division (the "Consent Decree"). A copy of the Consent Decree is available at

<https://apps.saws.org/infrastructure/epa/download.cfm>

Work performed pursuant to this contract is work that SAWS is required to perform pursuant to the terms of the Consent Decree. In the event of any conflict between the terms and provisions of this Consent Decree Notice Provision and any other terms and provisions of this Contract or the Contract Documents, the terms and provisions of this Consent Decree Notice Provision shall prevail.

A. Retention of documents.

Contractor shall retain and preserve all non-identical copies of all documents, reports, research, analytical or other data, records or other information of any kind or character (including documents, records, or other information in electronic form including, but not

• Coordination

– CPS Energy

- SAWWS has initiated coordination
- Contractor to complete coordination/payment

– JBSA

- Approvals for Trucking
- Fencing/Secure perimeter
- CM to be point of contact with JBSA

– TxDOT

- Construction Traffic
- Water Tower Site



Environmental Overview

[Phase I Environmental Report JM Assets Property](#)

Feb 24, 2020

Note: You will be prompted to login to access this document.



[Phase I Environmental Report Final](#)

Feb 24, 2020

Note: You will be prompted to login to access this document.



[Phase I Environmental Site Assessment Middle Connection Site Torres Tract](#)

Feb 24, 2020

Note: You will be prompted to login to access this document.



[Phase II Environmental Site Assessment Pearsall and Torres Tracts](#)

Feb 24, 2020

Note: You will be prompted to login to access this document.



[Phase II Environmental Site Assessment](#)

Feb 24, 2020

Note: You will be prompted to login to access this document.



[Geotechnical Data Report for Open Cut and Trenchless Installations](#)

Feb 24, 2020

Note: You will be prompted to login to access this document.



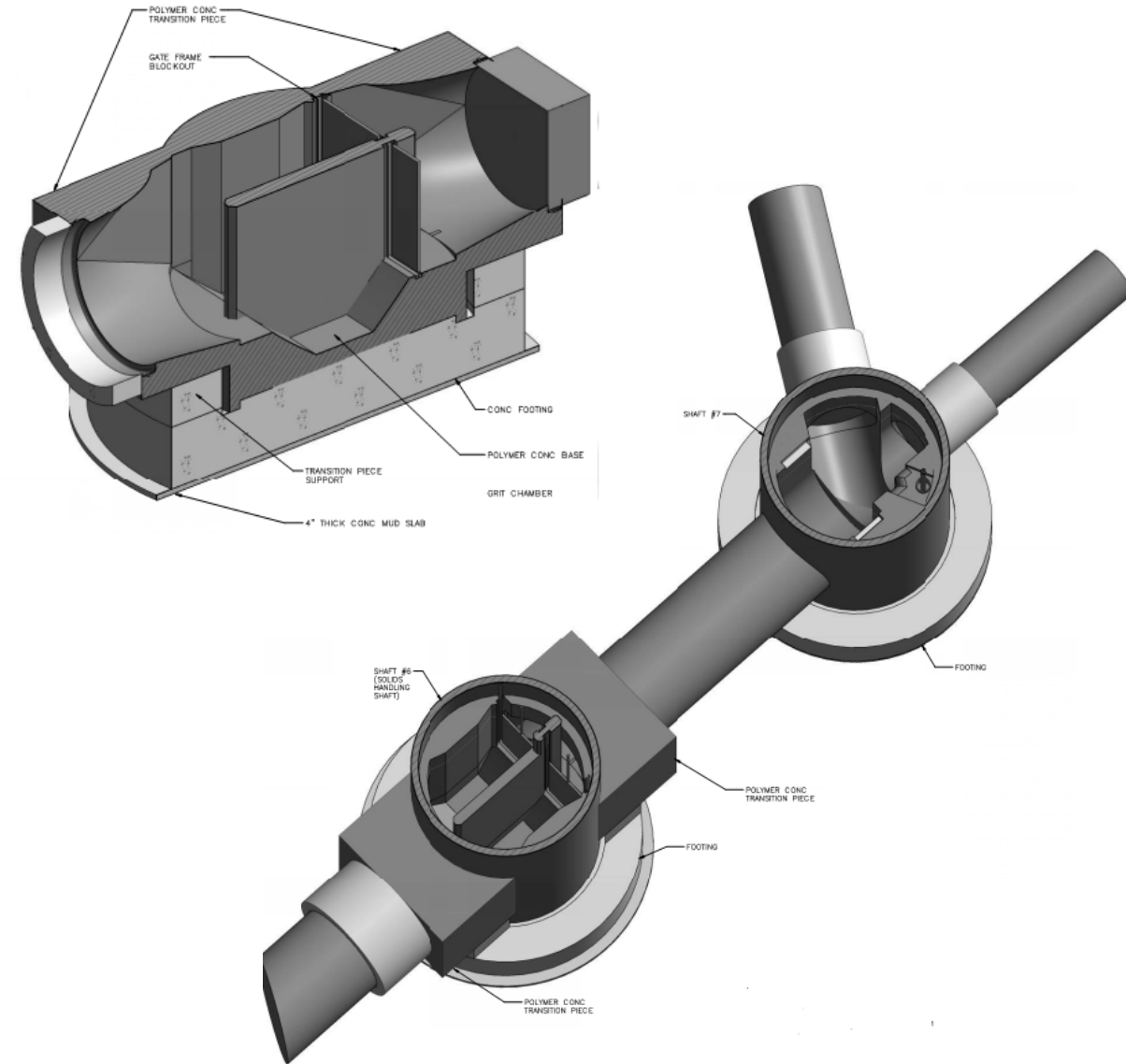
[Phase I Environmental Site Assessment Pearsall Shaft Gonzalez Tract](#)

Feb 24, 2020

Note: You will be prompted to login to access this document.



- W-I Connection
 - Flood Plain
 - Intent is to allow tunnel through
 - Dual Shafts (Sediment Trap, Confluence)
 - W-I Stub/Open Cut/Coordination with Exist. Contractor



- Shaft Construction
 - Construction Shafts
 - Permanent Shafts

W-6 Upper Segment

- Addenda

- Addendum No. 1 (Date – 03/10/20)
- Addendum No. 2 (Date – 03/13/20)
- Addendum No. 3 (Date – 03/17/20)



W-6 UPPER SEGMENT: HWY 90 TO SW MILITARY DRIVE SEWER MAIN PROJECT
 Solicitation Number: CO-00317
 Job No.: 19-4519

ADDENDUM 1
 March 10, 2020

To Respondent of Record:

This addendum, applicable to work referenced above, is an amendment to the price proposal, plans and specifications and as such will be a part of and included in the Contract Documents. Acknowledge receipt of this addendum by entering the Addendum number and issue date on the space provided in submitted copies of the price proposal.

RESPONSES TO QUESTIONS

Q1: In the Supplementary Instructions to Respondents Paragraph C. Required Experience the reference for prior experience is for "wastewater pipeline installations via tunnel construction methods are a primary business focus and service". Would larger diameter tunneling projects that do not include the installation of pipelines qualify as required experience?

Response: *Experience performing large tunnels will be reviewed and considered but during evaluation may not be scored as high as past performance with similar scope to the subject project.*

Reminder, Respondents submitting a proposal for this RFCSP should clearly demonstrate, completely and sufficiently, that wastewater pipeline installations via tunnel construction methods are a primary business focus and service.

Reminder, SAWS in its sole discretion will determine whether a submitted project by Respondent is suitably comparable to the work in this RFCSP.

Q2: Can the required experience components be provided by different members of the same bidding Team?

Response: *Yes, however, regarding the prime contractor, a minimum of two (2) of the three (3) projects provided must have been performed by proposed Key Personnel (Project Manager, Project Engineer, Lead Surveyor, Quality Assurance and Quality Control Lead, Project Scheduler, Project Superintendent, Tunneling Superintendent(s), Tunnel Boring Machine (TBM) Operators, and Safety Manager). Also, if the prime contractor is relying on elements of its sub-contractors to meet the experience requirements for this project, SAWS retains sole discretion regarding whether or not the contractor team sufficiently meets the experience requirements for the project.*

Q3: If we are unable to attend the geotechnical core sample viewing on March 19th, will we be able to schedule a different time to view them?

Response: *No. At this time there are no other scheduled visits.*

Q4: Can you please confirm that we are registered for the pre-proposal meeting?

Response: *There is no need to pre-register for the meeting. Please be sure to arrive on time, or you will not be allowed to sign in.*



Reminders

- Innovative Ideas (Scope or Time)
- Base Bid Important
- Negotiation

- 2 TBMs required
- TBMs key to RFCSP

Questions

- Should be submitted no later than April 1, 2020 at 10:00 AM CDT
- Must be submitted in writing:

Florinda Gonzales

Interim Contract Administrator

Contract Administration Department

San Antonio Water System

florinda.Gonzales@saws.org

Fax: (210) 233-3914

Questions?

Oral statements or discussion during the pre-proposal meeting will not be binding, nor will it change or affect the terms or conditions within the Plans and Specifications for this Project. Changes, if any, will be addressed only via an Addendum.

W-6 UPPER SEGMENT: HWY 90 TO SW MILITARY DRIVE SEWER MAIN PROJECT

Gail Hamrick-Pigg, PE

Director - Engineering

Jeff Farnsworth, PE

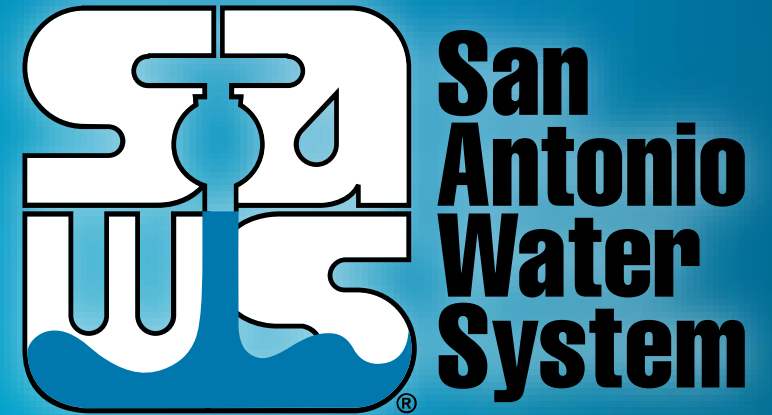
Kimley-Horn and Associates Sr. Project Manager

Diana L. Woltersdorf

Contract Administration Manager

Marisol V. Robles

SMWVP Program Manager



Non-Mandatory Pre-Proposal Meeting
March 18, 2020 at 2:00PM

MAKING SAN ANTONIO
WATERFUL

